

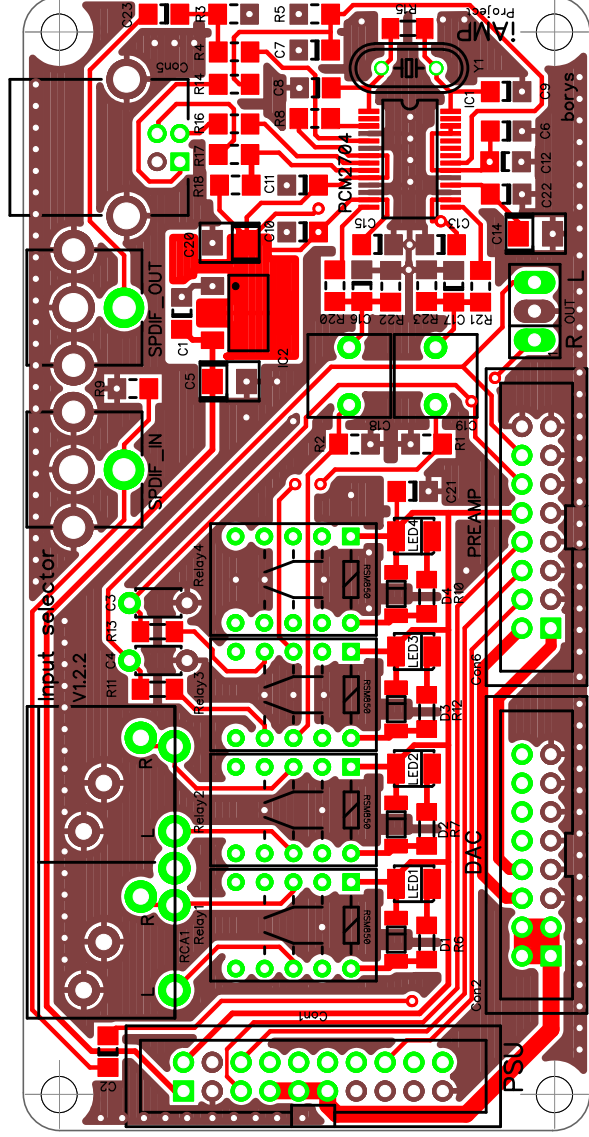
# PSU Controller

+5V	PCM	5V	Relay
gND			
M+			M-
+5V	DAC	Relay1	
+5V	DAC	Relay2	
+5V	DAC	Relay3	
gND		Relay4	
gND		DIRECT	
gND		-12V	
gND		+12V	

Sterowanie miosa

Relay1=RCA1  
 Relay2=RCA2  
 Relay3=PCM2704  
 Relay4=DAC, Malina  
 DIRECT=Tone/ctrl

M+	Volume	motor
M-	Volume	motor



+5V	DAC	+5V	DAC	+12V	-12V	NC	SPDIF_IN	IN_L	IN_R
gND		gND		gND	gND	gND	gND	gND	gND

DAC

+12V	DIRECT	M-	M+	+5V	OUT_R	OUT_L	gND	gND
-12V		gND	gND	gND	gND	gND	gND	gND

PREAMP